



#### Color Variants

BSP250110
Full glass door in Gaggenau Metallic
Width 60 cm
BSP250100
Full glass door in Gaggenau Anthracite
Width 60 cm
BSP250130
Full glass door in Gaggenau Silver
Width 60 cm

#### Included accessories

1 x STS tray-GN2/3-punched-40 mm deep.
1 x STS tray-GN2/3-unpunched-40 mm deep.
1 x grid.
1 x pluggable meat probe.

#### Optional accessories

GN144130
Gastronorm insert, non-stick, GN 1/3
GN144230
Gastronorm insert, non-stick, GN 2/3
GN154130
Gastronorm insert, non-stick, GN 1/3
GN154230
Gastronorm insert, non-stick, GN 2/3
GN340230
Gastronorm roaster in cast aluminium.
GR220046
Wire rack, stainless steel

#### Product Variants

BSP250100
Combi-steam oven 200 series
Full glass door in Gaggenau Anthracite
Width 60 cm
Right-hinged
Controls at the top
BSP250130
Combi-steam oven 200 series
Full glass door in Gaggenau Silver
Width 60 cm
Right-hinged
Controls at the top
BSP251100
Combi-steam oven 200 series
Full glass door in Gaggenau Anthracite
Width 60 cm
Left-hinged
Controls at the top
BSP251110
Combi-steam oven 200 series
Full glass door in Gaggenau Metallic
Width 60 cm
Left-hinged
Controls at the top
BSP251130
Combi-steam oven 200 series
Full glass door in Gaggenau Silver
Width 60 cm
Left-hinged

BSP250110
Combi-steam oven 200 series
Full glass door in Gaggenau Metallic
Width 60 cm
Right-hinged
Controls at the top

Flush installation
Water tank
Hot air 30 °C to 230 °C can be combined with chosen humidity level of 0%, 30%, 60%, 80% or 100%
TFT touch display
Panel-free appliance with surface control module
Steaming without pressure
Electronic temperature control from 30 °C to 230 °C
Core temperature probe, removable
Net volume 42 litres
Energy efficiency class A

#### Heating methods

Hot air + 100 % humidity.
Hot air + 80 % humidity.
Hot air + 60 % humidity.
Hot air + 30 % humidity.
Hot air + 0 % humidity.
Dough proofing.
Defrosting.
Regenerating.
Low temperature cooking.

#### Handling

Rotary knob and TFT touch display operation.
Clear text display in 25 languages.
Option to save individual recipes (incl. core temperature probe).
Information key with use indicators.
Side-opening door opens up to 110° angle.

#### Features

Removable 1.3 litre water tank.
Water level warning.
Core temperature probe with automatic shut-off.
Actual temperature display.
Timer functions: cooking time, cooking time end, timer, stopwatch, long-term timer.
Electronic boiling point detection.
48 W halogen light on the side.
Hygienic stainless steel cooking interior.
4 tray levels.

#### Safety

Child lock.
Safety shut-off.
Cooled housing with temperature protection.

#### Cleaning

Cleaning aid.
Drying programme.
Descaling programme.
Grease filter, dishwasher-safe.

#### Planning notes

Door hinge not reversible.
No other electrical appliances should be installed above the BS.
The door panel surface of the appliance extends 21 mm from the furniture cavity.
The outer edge of the door handle extends 72 mm from the furniture cavity.
Necessary lateral gap between appliance door and furniture panel of min. 5 mm.
Consider the overhang, incl. the door handle, when planning to open drawers next to the appliance.
When planning a corner solution, pay attention to the 110° door opening angle.

Characteristics
Color / Material Front
Stainless steel
Built-in / Free-standing
Built-in
Door opening
Lateral
Required niche size for installation (HxWxD)
450 x 560 x 550
Dimensions of the product (mm)
455 x 590 x 547
Control Panel Material
without panel
Door Material
Glass
Net weight (kg)
36.0
Approval certificates
CE, VDE
Length electrical supply cord (cm)
150
Cooking method
Defrost, fermentation, Hot Air, Hot air + steam 100%, Hot air + steam 30%, Hot air + steam 60%, Hot air + steam 80%, low temperature steam, Regeneration
Time-setting Options
Start and Stop

#### Consumption and connection features

Electrical connection rating (W)
Current (A)
8
Voltage (V)
220-240
Frequency (Hz)
50; 60
Plug type
fixed connection, no plug
Approval certificates
CE, VDE
Universal Product Code
825225915003
Color / Material Front
Stainless steel
Alternative colors available
BSP250100, BSP250130
Energy input
Electric
Current (A)
8
Voltage (V)
220-240
Frequency (Hz)
50; 60
Approval certificates
CE, VDE
Length of electrical supply cord (in)
Plug type
fixed connection, no plug
Appliance Dimensions (h x w x d) (in)
Required cutout/niche size for installation (in)
Dimensions of the packed product (in)
Net weight (lbs)
79
Gross weight (lbs)
84

2016-10-04

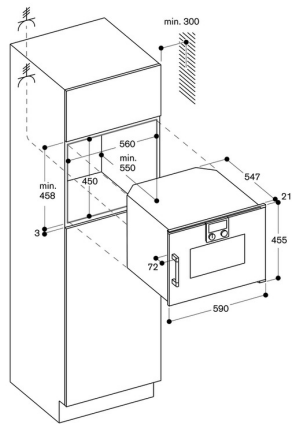
Page 1

To achieve the 550 mm installation depth, the connection cable needs to follow the slanted edge on the corner of the housing.  
The mains socket needs to be planned outside of the built-in niche.

#### Connection

Energy efficiency class A.  
Total connected load 2.0 kW.  
Connection cable 1.5 m without plug.

BSP250110  
Combi-steam oven 200 series  
Full glass door in Gaggenau Metallic  
Width 60 cm  
Right-hinged  
Controls at the top  
2016-10-04  
Page 2



Side view of BSP, BMP over BOP

