



Color Variants

AC200160
Stainless steel and glass
Width 52 cm

AC200160
Canopy extractor 200 series
Stainless steel and glass
Width 52 cm
Air extraction/recirculation

Can be integrated invisibly in upper cabinet
Energy-saving, low-noise fan
Rim extraction with flat and easy-to-clean glass cover
Dimmable, neutral white LED light for ideal illumination of the whole cooktop
Air extraction or recirculation system
Energy efficiency class A

Output

Performance and noise level, output level 3/Intensive:
Air output according to DIN EN 61591.
Sound power level according to EN 60704-3.
Sound pressure level according to EN 60704-13.
Air extraction:
550 / 720 m³/h.
67 / 72 dB (A) re 1 pW.
53 / 58 dB (A) re 20 µPa.
Air recirculation:
550 / 690 m³/h.
72 / 77 dB (A) re 1 pW.
58 / 63 dB (A) re 20 µPa.

Features

Three electronically controlled power levels and an intensive mode.
Remote control is available as a special accessory.
Interval ventilation, 6 min.
Run-on function, 6 min.
Grease filter saturation indicator.
Metal grease filter, dishwasher-safe.
Glas filter cover.
Neutral white LED light (4000 K), dimmable.
Lamp output 2 x 1 W.
Illuminance: 244 lx
Fan technology with highly efficient, brushless DC motor.

Product rating

Energy efficiency class A.
Energy consumption xxx.
Ventilation efficiency class A.
Illumination efficiency class A.
Grease filter efficiency class D.
Sound level min. 44 dB / max. 67 dB normal mode.

Planning notes

Patented air recirculation module with activated charcoal filter can be installed in the upper cabinet. The activated carbon filter can be changed from the front by simply pulling out the filter drawer.
The door of the upper cabinet must be fully open in order to change the activated charcoal filter.
Can be integrated invisibly in upper cabinet.
Suitable for the installation in 60 cm cabinet.
Vario cooktops with intensive production of vapours like VR/VP/VF should be placed in the middle beneath the cooker hood (in this case air recirculation is not recommended).
Clearance above gas appliances min. 65 cm (more than total load gas 12 kW min. 70 cm).
Clearance above electric appliances min. 50 cm.

Characteristics

Product name/family
Color chimney
Typology
Traditional
Approval certificates
, CE, Eurasian, UA, VDE
Length of electrical supply cord (cm)
100
Required niche size for installation (HxWxD)
418mm x 496mm x 264mm
Height of the chimney (mm)
Height of product, without chimney (mm)
Minimum distance above an electric hob
500
Minimum distance above a gas hob
650
Net weight (kg)
10.0
Type of control
Electronic
Number of speed settings
3
Maximum output air extraction (m³/h)
550
Boost position output recirculating (m³/h)
690
Maximum output recirculating air (m³/h)
550
Boost position air extraction (m³/h)
720
Number of lights (Stck)
2
Noise level (dB(A) re 1 pW)
67
Diameter of air outlet (mm)
150 / 120
Grease filter material
Washable aluminium
EAN code
4242006257460

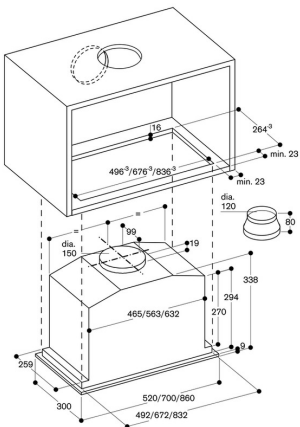
Consumption and connection features

Connection rating (W)
272
Current (A)
3
Voltage (V)
220-240
Frequency (Hz)
50
Plug type
Gardy plug w/ earthing
Installation type
Half-integrated
created on 2016-10-10
Page 1

When installing a ventilation hood with air extraction mode and a chimney-vented fireplace, the hood's power supply line needs to feature a suitable safety switch.

Connection

Total connected load 272 W.
Connecting cable 1.0 m with plug.



View of upper cabinet from above with AC 200 and AA 211 812

